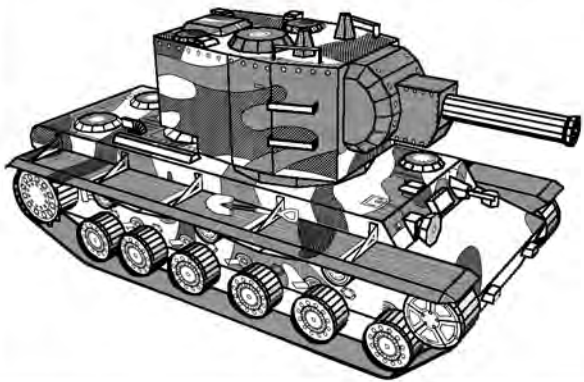
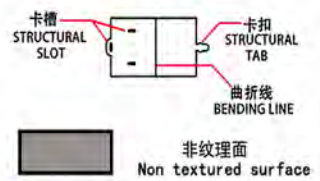


成品示意图  
360° VIEW PICTURE

# M4 KV2-重型坦克 YM-N022-S



## 组装基本步骤示意图 BASIC ASSEMBLING STEPS



固定方式一:  
将卡扣穿过对应固定孔,  
按对应角度曲折 (图一)  
Fitting method 1:  
put the tab in the slot,  
bend properly(p1)



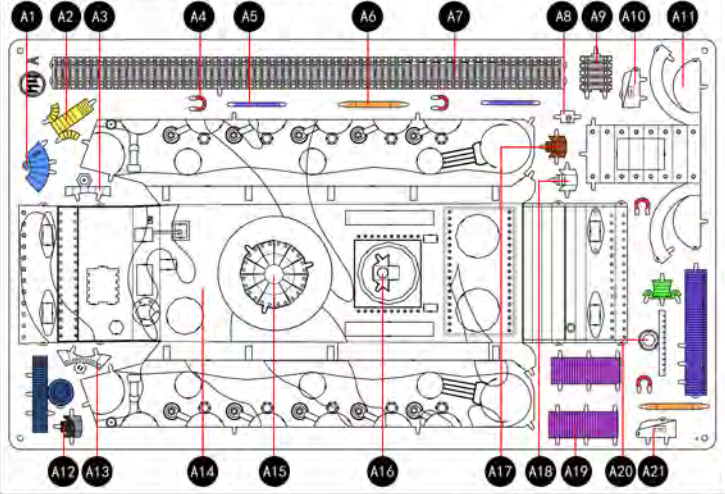
- ⚠️ 注意拼装前带手指套  
Take finger cots before assembly
- ⚠️ 相同颜色的板件为统一编号  
The number of the parts of the same colour is unified

固定方式二:  
将卡扣穿过对应固定孔,  
用钳子类工具垂直扭曲固  
定卡扣 (图二)  
Fitting method 2:  
put the tab in the slot,  
bend the tab vertically  
with plier(p2).

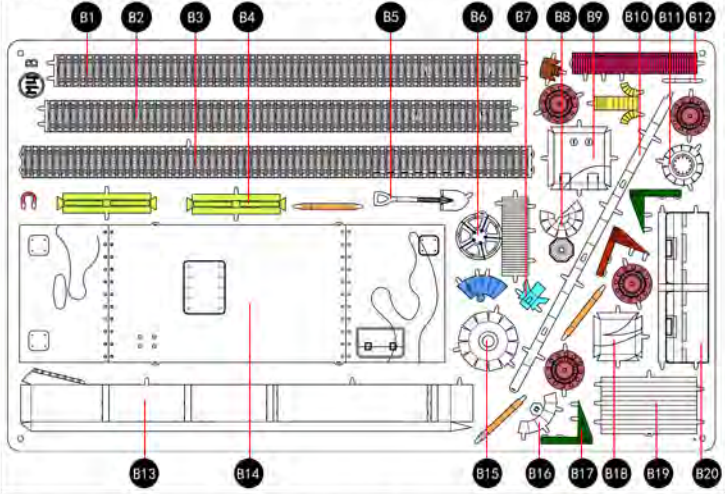


水贴使用方法  
用小的圆规在上半部画弧, 用牙签或镊子夹好, 放入水中, 一般水贴大约  
只需浸泡 2-3 秒, 然后沿画弧处撕开, 注意, 不要让水贴跟底座分离, 放到背  
上部水贴处, 直到固定上零件的位置, 夹住此零件并轻轻压水贴底座使胶分  
离, 然后再用棉签清理一下位置。  
Water Decal Usage:  
Draw a small circle on the upper part with a compass, hold it with a toothpick or tweezers, put it in water, usually water decal  
only needs to be soaked for 2-3 seconds, then tear it along the arc, pay attention not to let the decal separate from the base,  
put it on the upper part of the decal, until it is fixed to the position of the part, clamp the part and gently press the decal to the base  
to separate the glue, then use a cotton swab to clean the position.

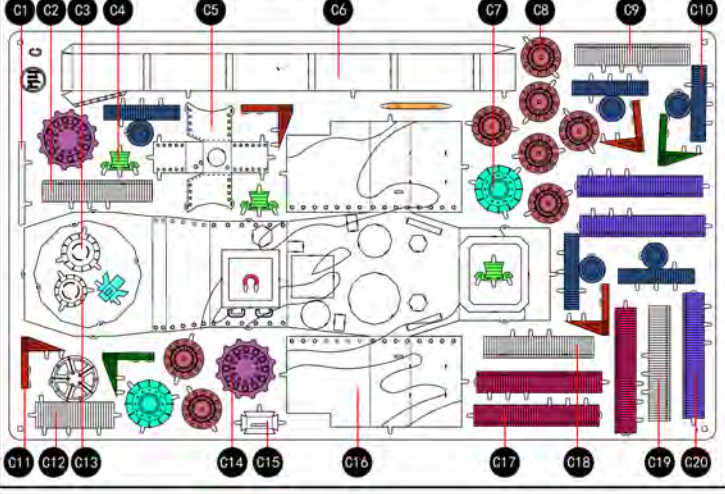
## 金属部件A METAL SHEET-A



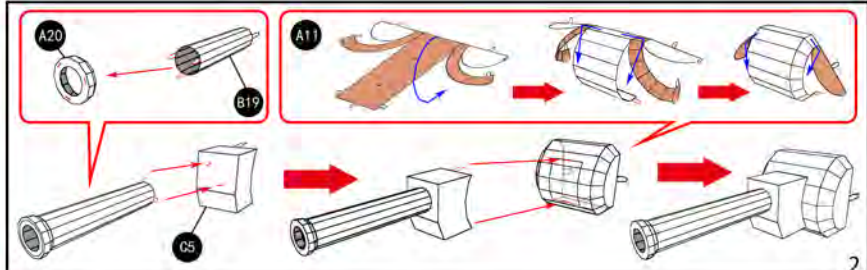
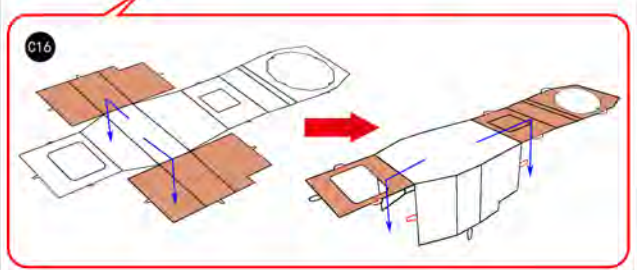
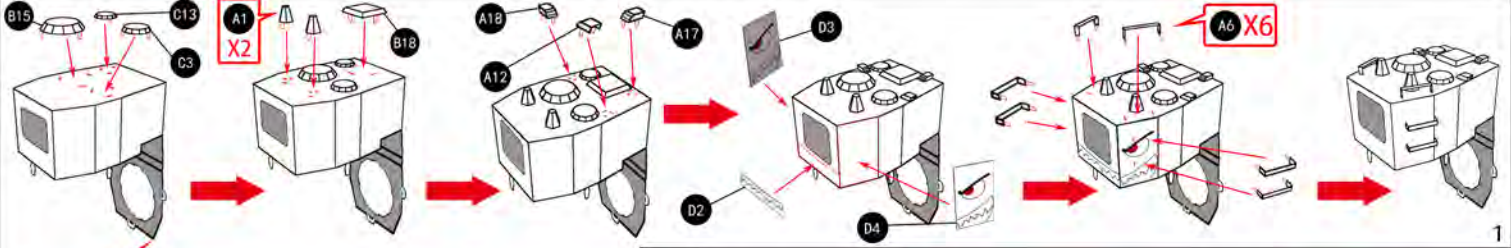
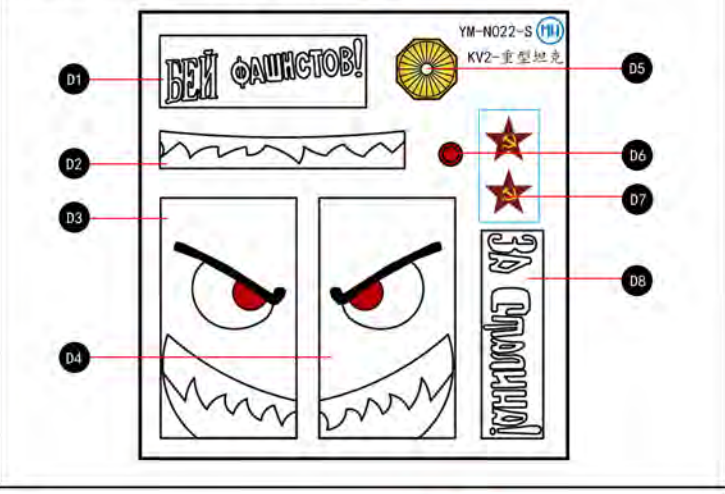
## 金属部件B METAL SHEET-B



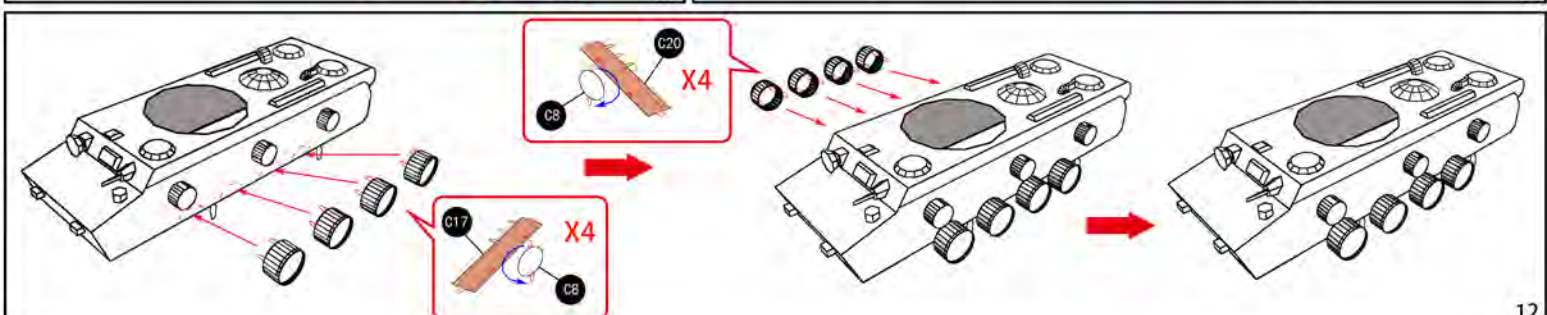
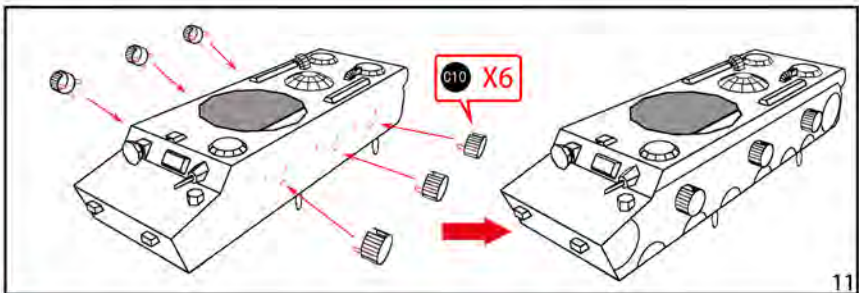
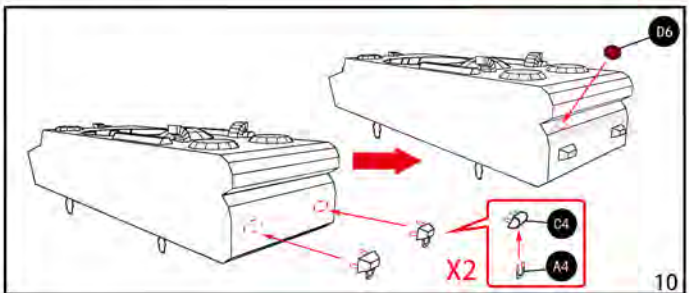
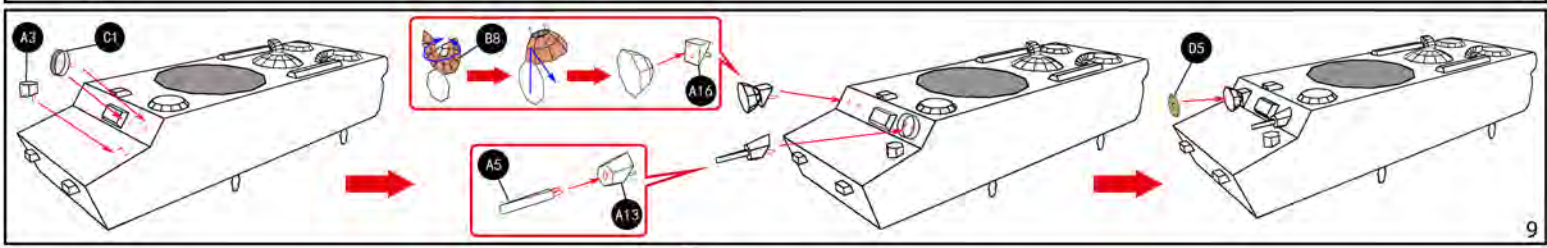
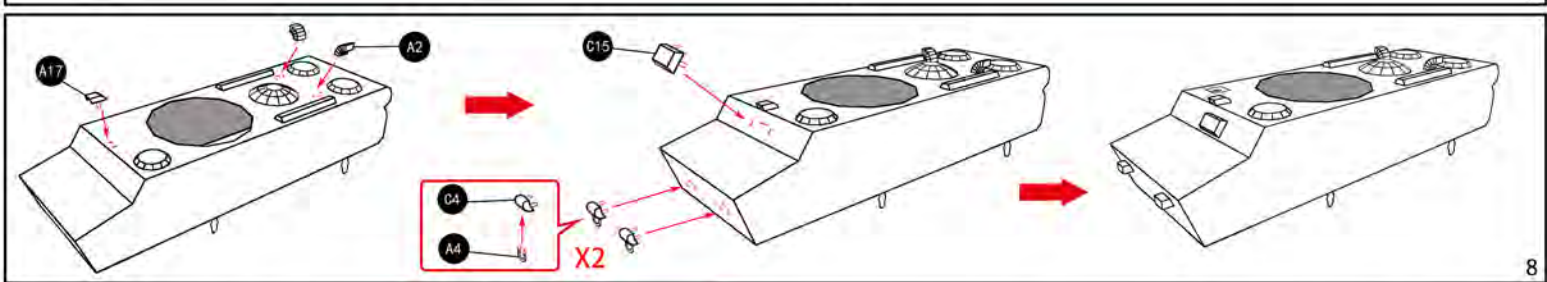
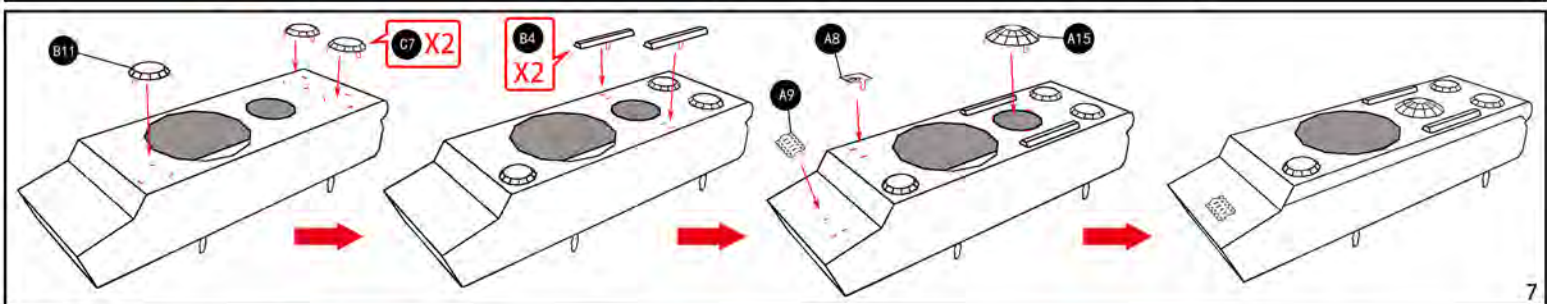
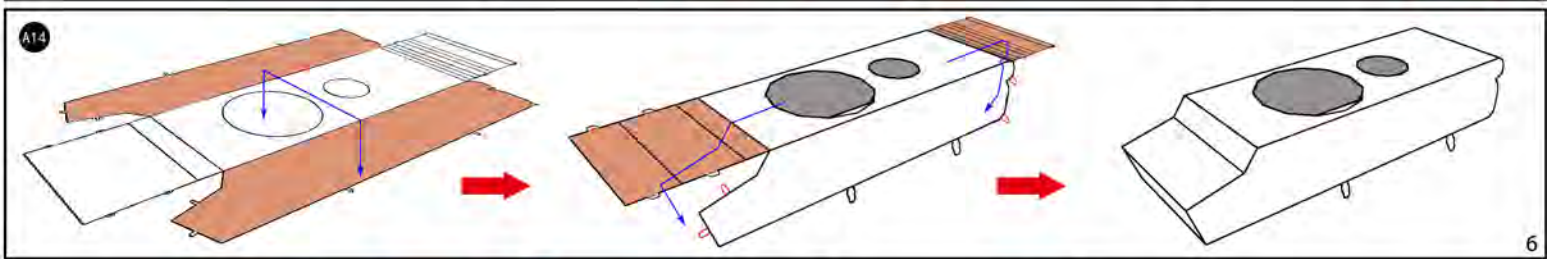
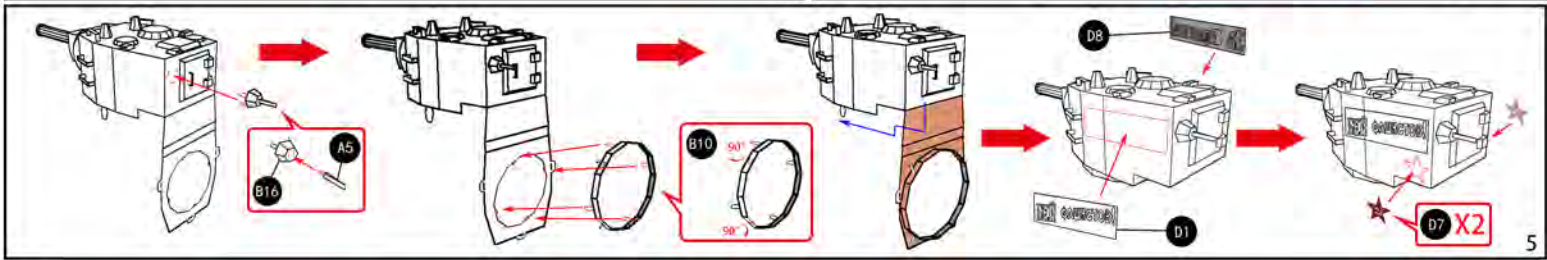
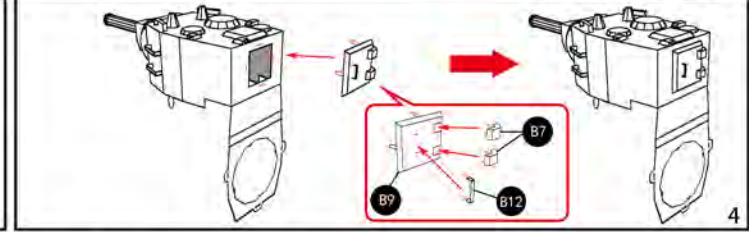
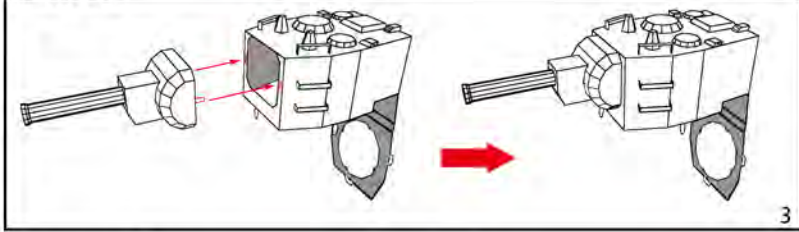
## 金属部件C METAL SHEET-C



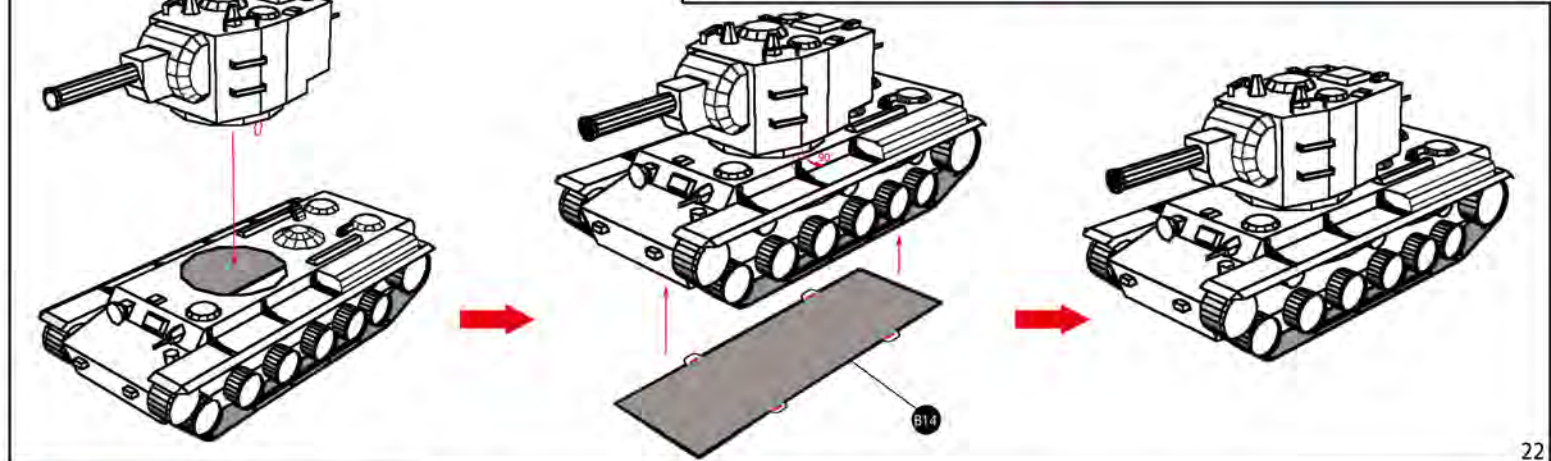
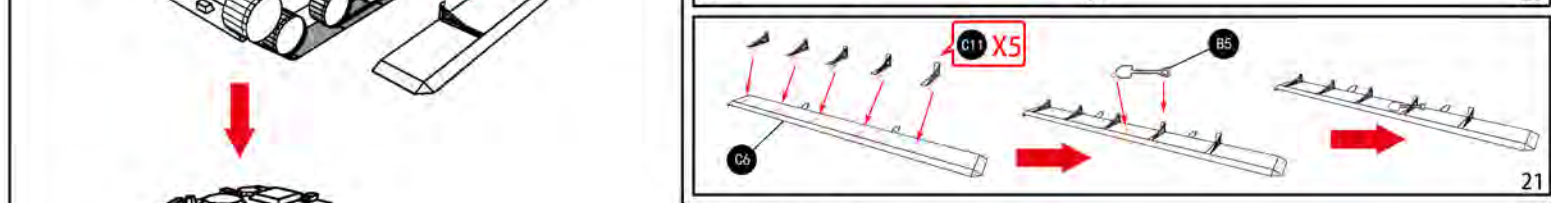
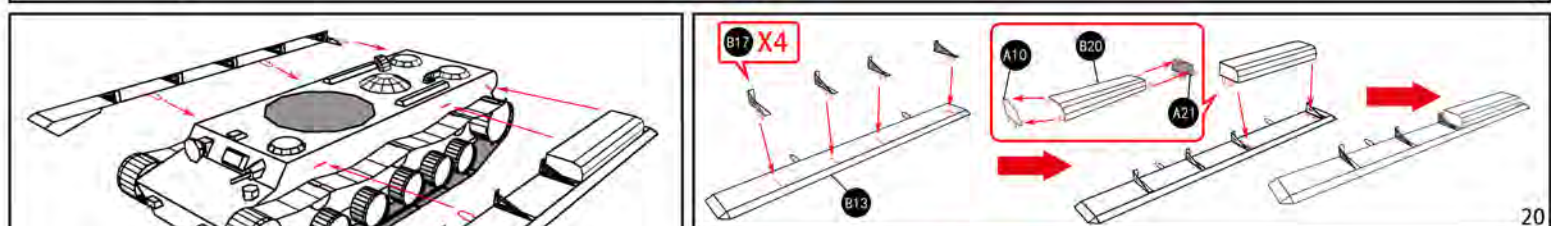
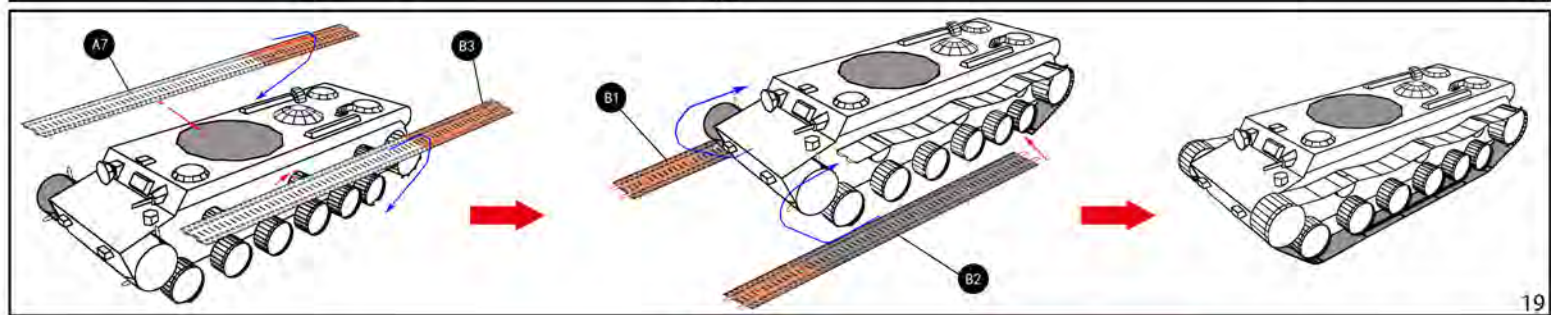
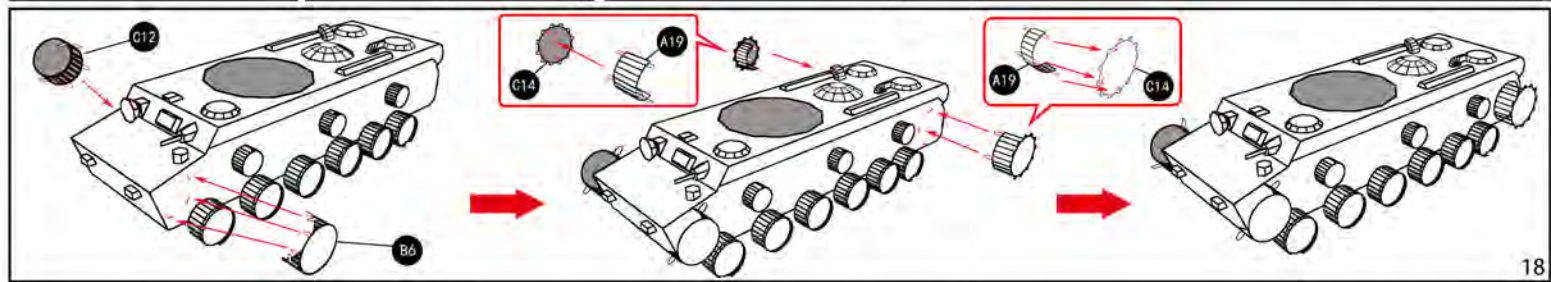
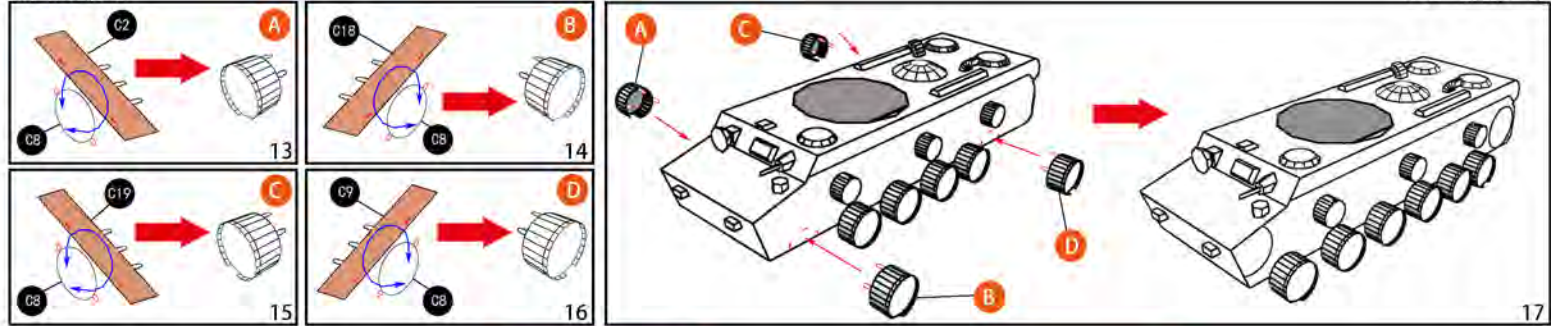
## 水贴部件D THE DECAL PART-D











**MU 艺模**  
MU art model

扫码加入微信公众号 解锁更多模型  
Scan the two-dimensional code to join us and unlock more models.

上海艺模电子科技有限公司  
Shanghai Art Model Electronic Science and Technology Co., Ltd.

Tel: 021-58942999  
Website: www.maplemu.com

Design by: 皮日天  
因幡Tewi  
EterNaL



关注我们  
focus on us